



2014

---

# Electrify Your Future

Information Nights/ Job Shadowing/ Externships

A decorative graphic at the bottom of the slide consisting of three overlapping diagonal bands of color: blue, yellow, and red, all pointing towards the right.

Taking **your future** to heart.

# Why we are here!



- 50% of workforce will be eligible to retire in the next 10 years
- Give students a better understanding of crafts in the utility business
- 40 of our craft positions are within 1.0 hour of Wichita



# Safety

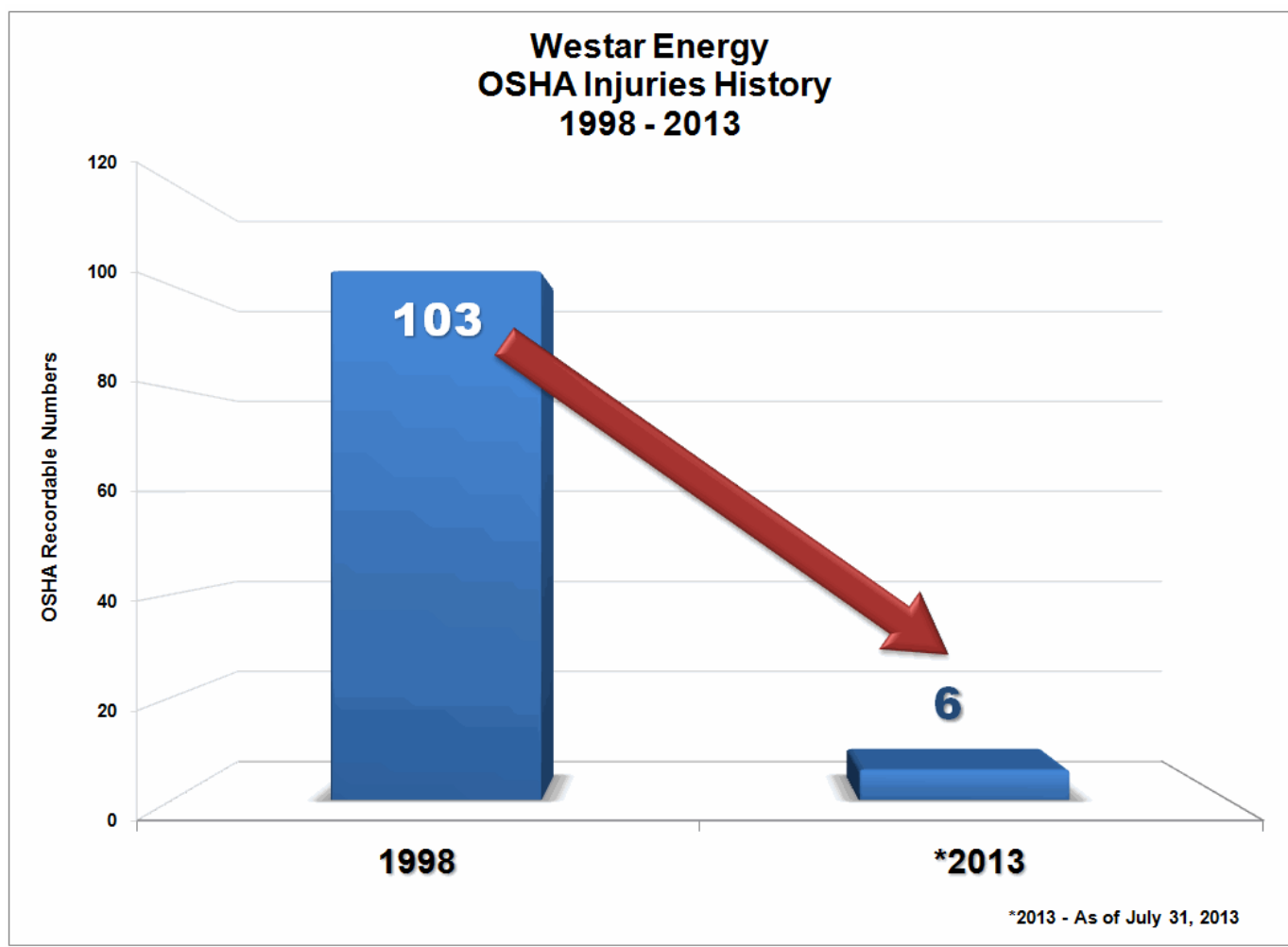
---



**“We will never trade the health and well being of our employees, contractors or the public for getting the lights on, generating electricity or servicing a customer”**

**Doug Sterbenz  
Chief Operating Officer  
Westar Energy**

# Safety



# Pay & Benefits

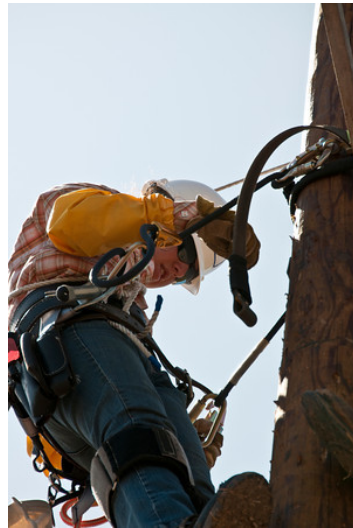
---

	<u>Apprentice</u> <u>Wages</u>	<u>Journeyman</u> <u>Wages</u>
• <b>Field Positions</b>		
• Lineman Journeyman	\$23.00	\$38.00
• Substation Technicians	\$25.00	\$38.00
• Underground Cablesplacers	\$23.00	\$38.00
• Relay Technicians	\$29.00	\$42.00
• Meterperson Journeyman	\$25.00	\$35.00
• <b>Power Plant Positions</b>		
• Operators	\$24.00	\$39.00
• Instrument & Control Technicians	\$34.00	\$39.00
• Mechanical & Electrical Journeyman	\$25.00	\$36.00

# Pre-Qualifications

---

- Many of our craft jobs have a pre-qualification process in order to become qualified for the position
- **Examples:**
  - Lineman
  - Substation
  - Distribution Designer
  - Instrument & Control Technician
  - Mechanical/ Electrical
  - Meter and Service





# Working Conditions

- 24/7 coverage in most craft positions
- Work in all weather
- Extended work hours during storms and outages
- Physically demanding on the body





# Qualities NEEDED/ REQUIRED!

---

- Able to communicate
- Have good attendance
- Be accountable
- Have integrity
- Be able to hold others accountable
- Be able to listen, especially to details
- Be able to follow directions



# Job Shadowing

---

- Allows students an inside look at the opportunities that exist in the workplace
- Gives students a “hands on” approach
- Usually for 2 to 4 hours each day- Field workers
- Can be utilized in the spring and fall
- Build an agenda and students are evaluated on their progress



# Externships

---

- Allows faculty a first hand experience of the jobs available
- Gives teachers an ability to apply what they teach to a job function.
- Schedules for externships will vary depending on regions
- Typically will completed during summer months

# Opportunity to Your Future

---

- “Hands on” training that will allow you to participate in some of the actual jobs at Westar
  - Lineman
  - Control Room Operator
  - Power Plant Mechanic

## How to Qualify:

- Attend Electrify Your Future
- Sign up for interviews
- 20 students will be chosen



# Career Opportunities- Corporate

---

[www.WestarEnergy.com](http://www.WestarEnergy.com)

## Business

- Accounting
- Finance
- Internal Audit
- Human Resources
- Customer Service
- Communications
- Administrative
- Legal
- Compliance
- IT/Security
- Other related disciplines

## Engineering

- Plant Engineering
- Project Engineering
- Construction Engineering
- Electrical Engineering
- Mechanical Engineering
- Environmental Engineering
- Civil Engineering
- Industrial Engineering
- Other related disciplines

# Craft Scholarship Opportunities

- **3 Scholarships**
  - \$2,000 each (\$1,000 per semester)
  - Renewable up to 2 years
  - Open to all Kansas High School Seniors
  - Major or training must be related to the Lineman or Power Plant Operations occupation
  - Applied to tuition and campus housing only
- **1 Scholarship for Women**
  - All-girls Lineman camp focus
- **Internal selection and Ellis Foundation Administration**
- **Internship Opportunities**





2014 ELECTRIFY YOUR FUTURE