

Oh, the Places You'll Go ... with Languages

Phyllis Farrar
KSDE Conference
November 6, 2012



Overview

- Places to go
- World languages & Common Core standards
- World languages & CTE
- World languages & testing



Oh, the places you'll go

WHERE?



Places?

Public Universities



Answers to frequent questions

Q: Why should 'they' take a foreign language?

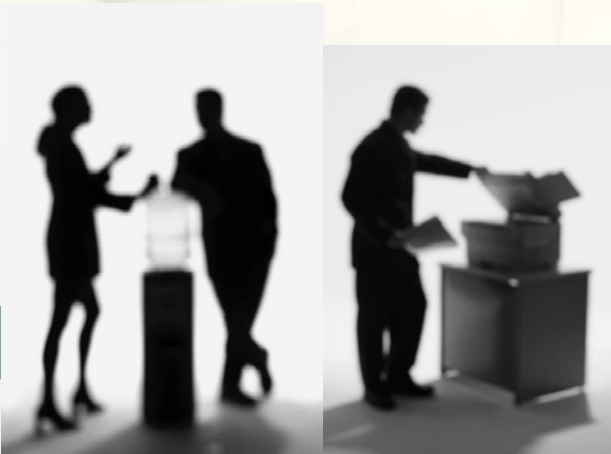
A: defines whether 'they' will have a job in the 21st Century

Q: What language should they study?

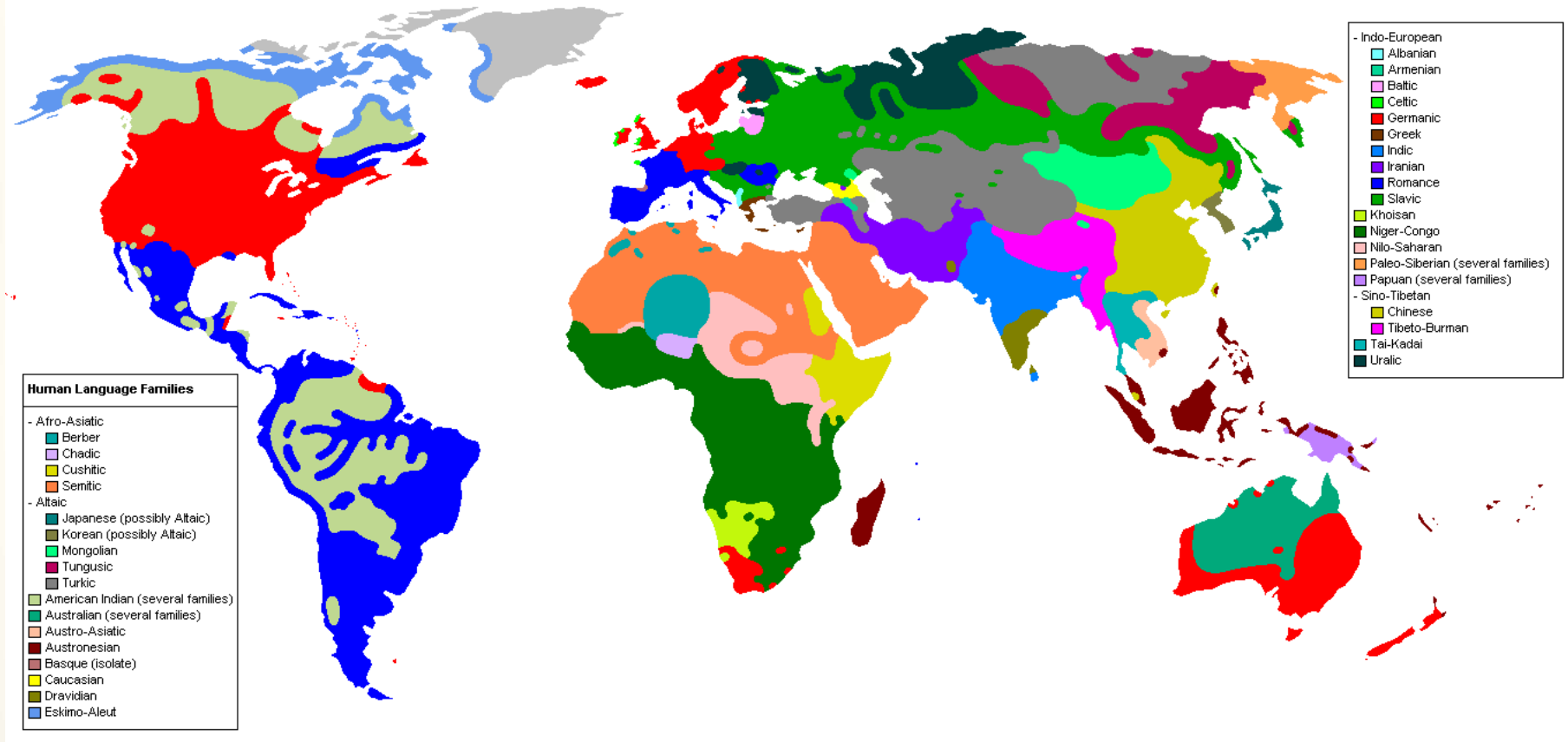
A: the one they want to speak

A: one that is spoken where they want to live and work

A: best teacher available



Places



Places

In a world where technology has eliminated physical obstacles such as mountain ranges or oceans, the only obstacles left to a global society is communication. Learning languages is critical.



Places?

Your community...

- Hospital
- Restaurant
- District court
- Professional office
- Building contractor
- Technology services
- News media

Across the state...

Wichita – selling airplane parts to Korea

Hutchinson – Siemens plant for wind turbines

Lawrence – chemical production using equipment from Switzerland

KC, KS exporting automated chicken pluckers. . .



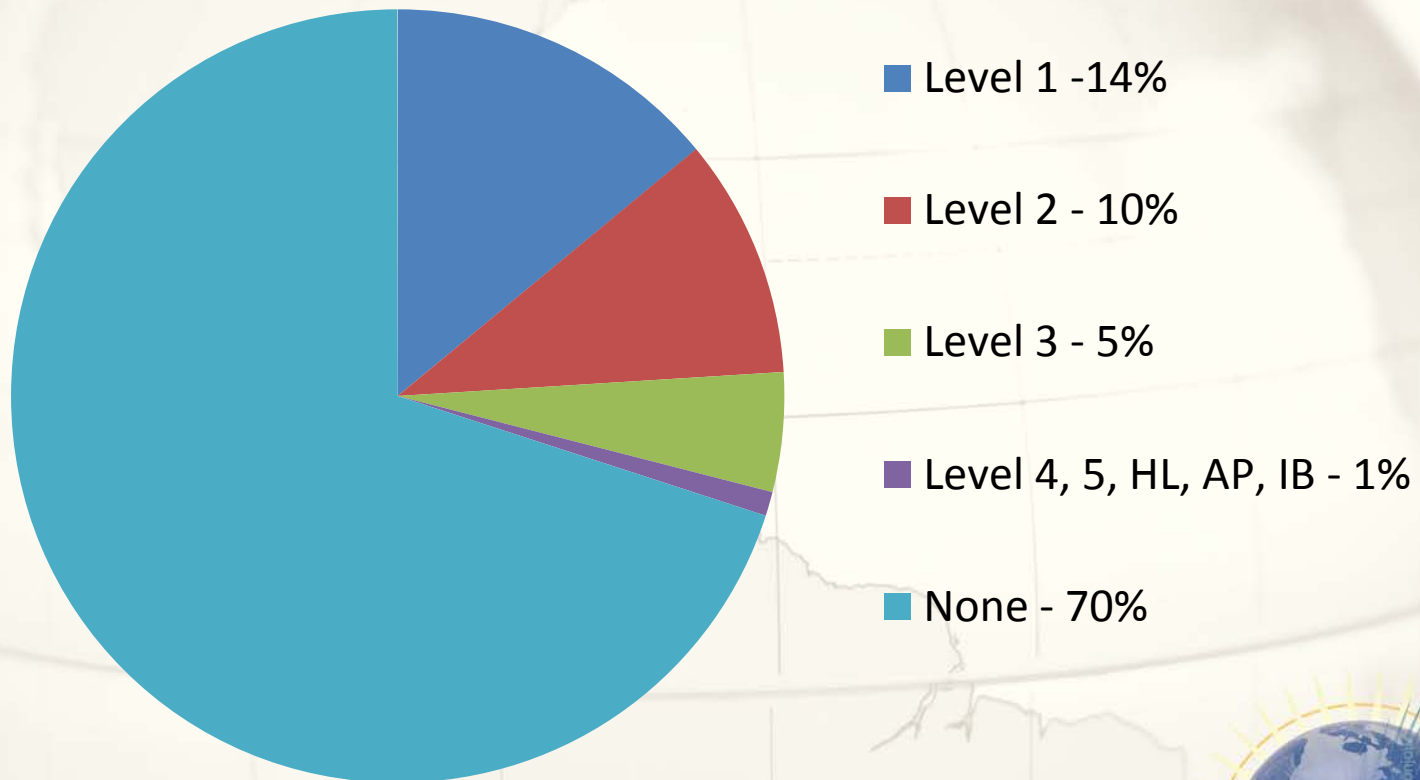
Oh, the places you'll go

WHO?

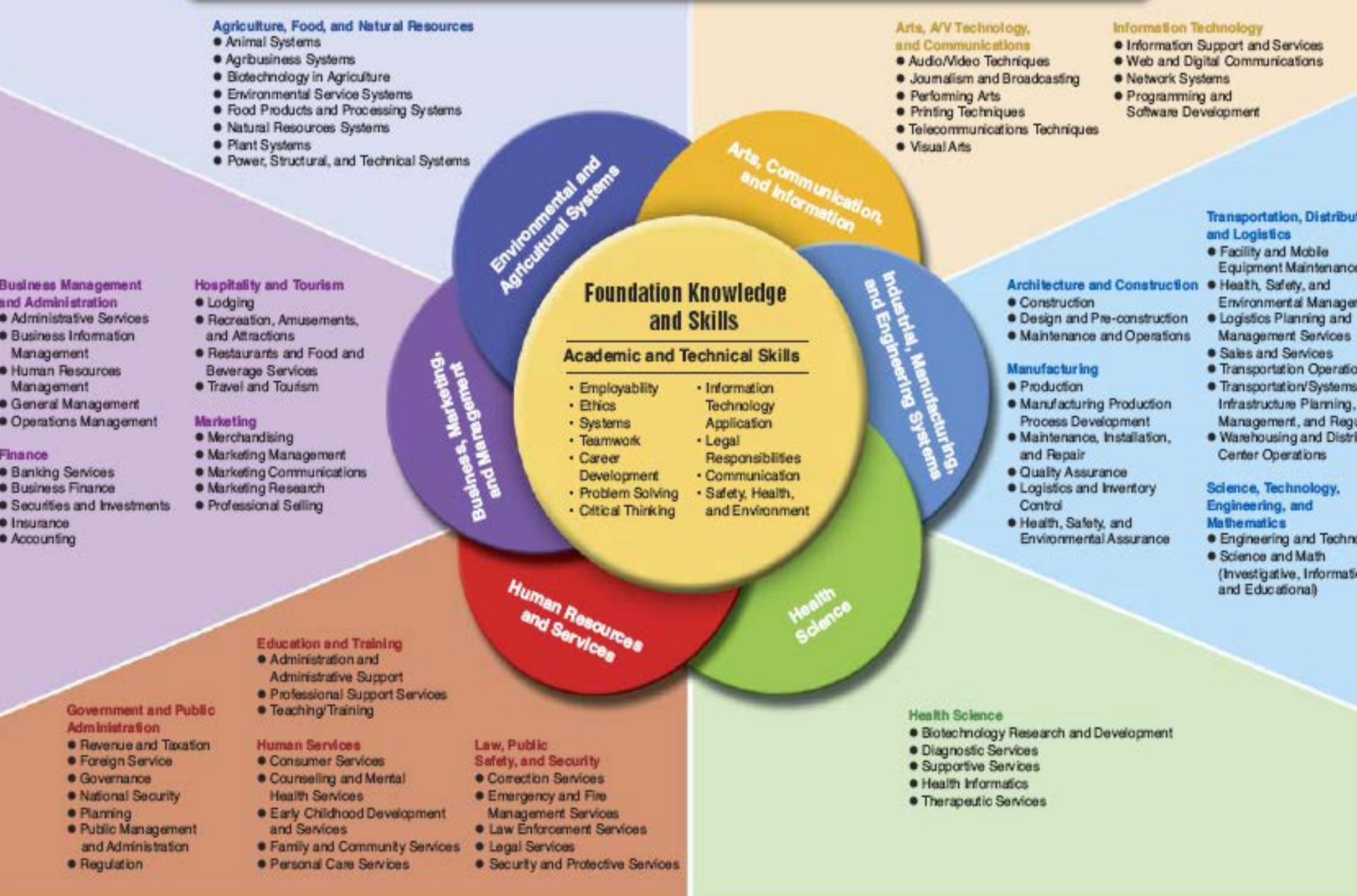


High School WL Enrollment – 30%

What percent of the 9-12 population studies language?



Kansas Career Fields and Clusters Model



Going places.....or NOT

- Did you learn a language in school?
- “Yes, I took 2 years of Spanish/French/German but can’t do anything with it.”



FSI/ILR

FSI/ILR	ACTFL
5	
4+	Distinguished
4	
3+	Superior
3	
2+	Advanced Plus
2	Advanced
1+	Intermediate High
	Intermediate Mid
	Intermediate Low
1	Novice High
	Novice Mid
0+	Novice Low
0	

Kansas 2008

STATE

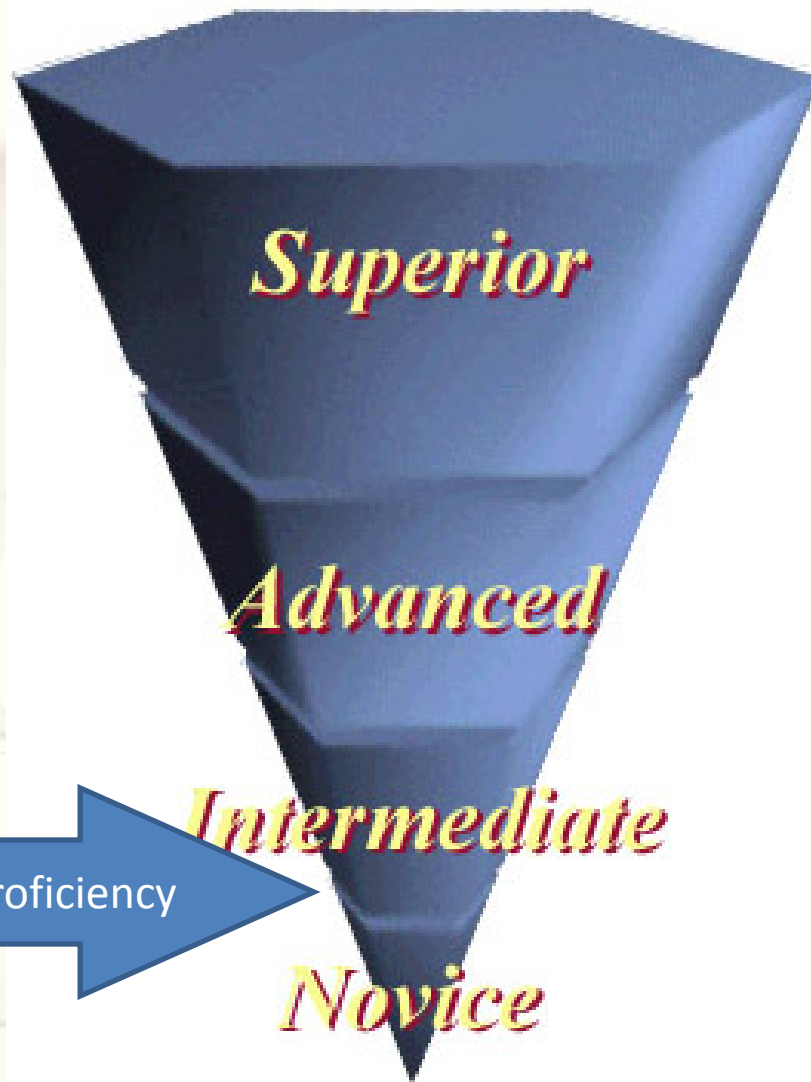
Advanced Low*
Intermediate High
Intermediate Mid
Intermediate Low
Novice High
Novice Mid
Novice Low

DISTRICT

Level AP, IB
Level 4
Level 3
Level 2
Level 1



WORLD LANGUAGES



Superior

Advanced

Intermediate

Novice

Minimal functional proficiency



Oh, the places you'll go

WORLD LANGUAGES & COMMON CORE ENGLISH LANGUAGES ARTS & LITERACY



Kansas Model Standards for World Language





Communication

1.1 Interpersonal / Conversational

- Listening
- Speaking/signing

1.2 Interpretive

- Reading
- Listening/viewing

1.3 Presentational

- Writing
- Public speaking/signing



ELA “College and Career Ready”

To be college and career ready, students must ...

1. Demonstrate independence in reading and understanding texts (literary and informational).
2. Build strong content knowledge, and share that knowledge through effective writing and speaking.
3. Adapt communication to audience, task, purpose, and discipline.
4. Comprehend as well as critique.
5. Value evidence, research, inquiry
6. Use technology and media strategically and capably.
7. Strive to understand other perspectives and cultures.



ELA Standards: Key Shifts

Previous State ELA Standards	Common Core State Standards
Focus on literature	Focus on more non-fiction
Texts that don't prepare students for complexity of college/career texts	Appropriately complex texts
Reading to report/summarize content	Reading to understand deeper meaning of what authors want to convey
English teacher solely responsible for teaching literacy	Literacy as part of science, social studies/history, and technical subjects (6-12)
Primarily writing personal narratives	Primarily writing to inform or argue using evidence
Most emphasis on content-specific vocabulary	Academic vocabulary given emphasis



Oh, the places you'll go

WORLD LANGUAGES & COMMON CORE MATHEMATICS





Connections

Assessed standards in Kansas (AYP & QPA)

- ▲ Reading (annually grades 3-8, HS)
- ▲ Writing (annually grades 5, 8, 11)
- ▲ Math (annually grades 3-8, HS)
- ▲ Social Studies (biennially grades 6, 8 HS)
- ▲ Science (grades 4, 7, HS)

Model standards in Kansas

- Health • Music • Art • Technology



Mathematics Standards

Critical Areas

- Broad topics
Numbers & operations,
algebraic thinking,
measurement and data,
geometry
- By grade level
- Focus of transition efforts

Practices

- Rewards instructional best practices
- Outlines clear vision of how students should approach and learn mathematics
- Shifts focus from computation skills to mathematical understanding



Mathematics

Critical Areas

- Numbers and operations
- Algebraic thinking
- Measurement and data
- Geometry

WL Connections

- Addition, subtraction, multiplication, division
- Patterns
- Solving for an unknown
- More than, less than, equal to
- Time, money, volume, mass
- Estimation
- Represent and interpret data
- Shapes



Mathematical Practices

1. Make sense of problems and persevere in solving them.
2. Reason abstractly and quantitatively.
3. Construct viable arguments and critique the reasoning of others.
4. Model with mathematics.
5. Use appropriate tools strategically.
6. Attend to precision.
7. Look for and make use of structure.
8. Look for and express regularity in repeated reasoning.



Oh, the places you'll go

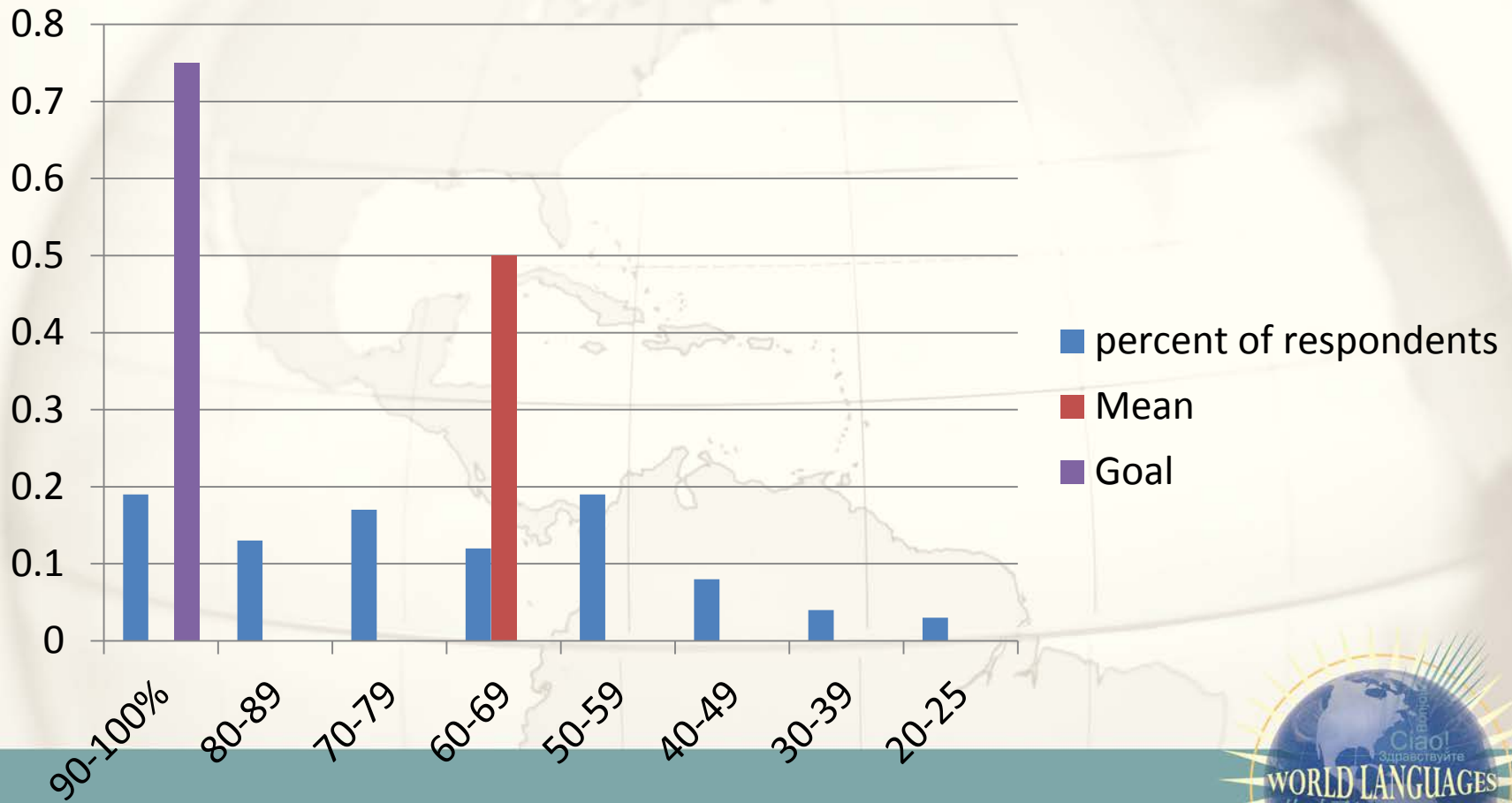
STANDARDS & INSTRUCTION



“Target Language Only” (90%)



“Target Language Only”?



Unpublished results of 2012 KSDE World Language survey.



“College and Career Ready” in world languages

AP

- Six themes
- Guiding questions
 - Global challenges
 - Science and technology
 - Contemporary life
 - Identity
 - Family & Community
 - Beauty and aesthetics

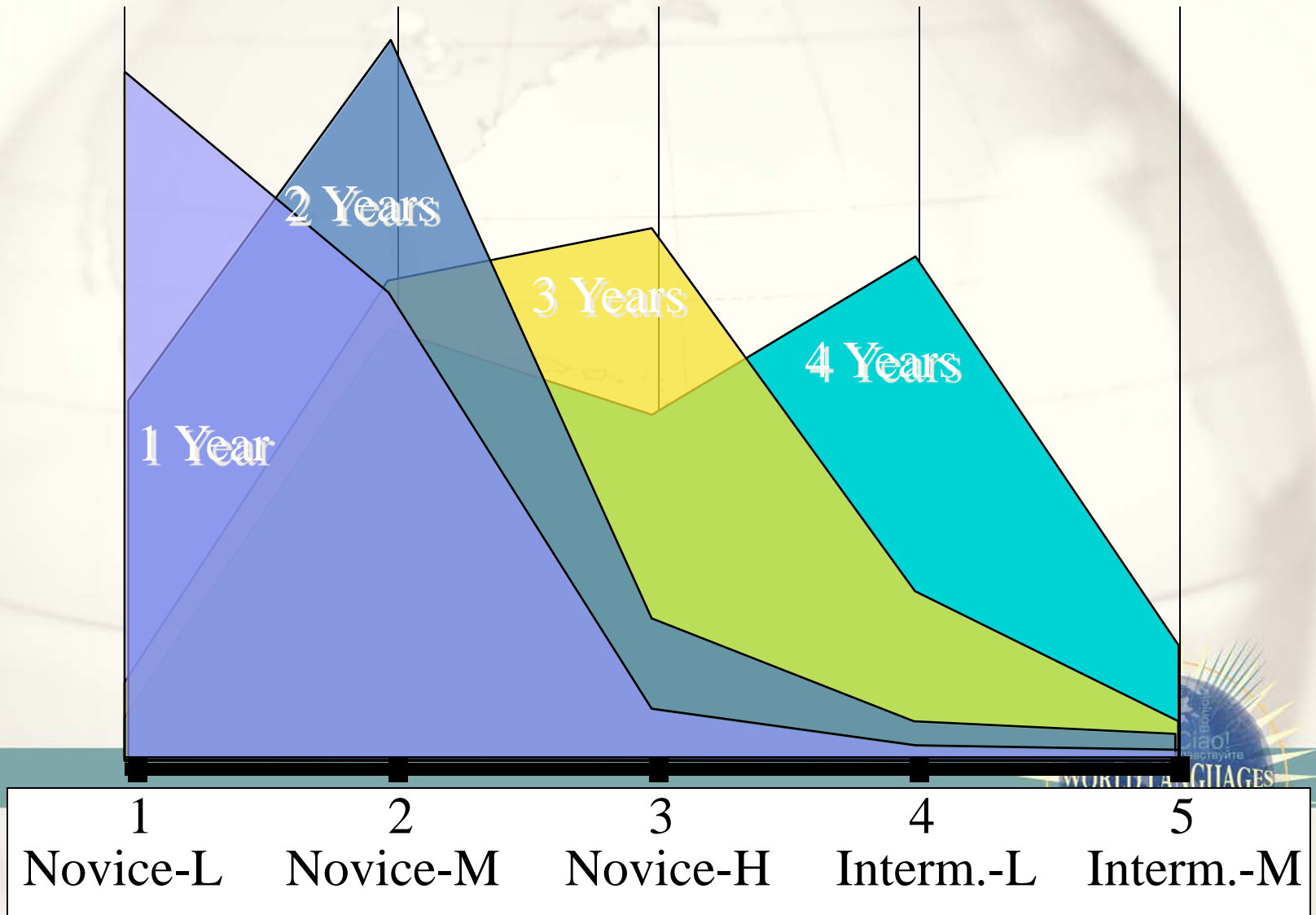
IB

Criterion

- Holistic learning
- Intercultural awareness
- Communication



Class / Proficiency Level Data



Certificate for Minimal Functional Proficiency

KS Benchmark Assessments

- Novice High Interpersonal
- Novice High Interpretive and Presentational

Summative Assessments

- National Exam
 - Level 3 or 4
 - 50th percentile or higher
- AP Exam
 - Score 3 or higher
- STAMP



FSI/ILR

5
4+
4
3+
3
2+
2
1+
1
0+
0

CEFR

C 2

C 1

B 2

B 1

A 2

A 1

ACTFL

Distinguished
Superior
Advanced Plus
Advanced
Intermediate High
Intermediate Mid
Intermediate Low
Novice High
Novice Mid
Novice Low

Kansas 2008

STATE

Advanced Low*

Intermediate High
Intermediate Mid
Intermediate Low
Novice High
Novice Mid
Novice Low

DISTRICT

Level 4 IB

Level 4

Level 4

Level 3

Level 2

Level 1



Summative Assessments

- OPI (\$134) or OPIC
- WPT (\$65) or APPL
- National Exams (~\$5) Fr/Ger/Lat/Sp
- STAMP (\$20)
- Advanced Placement (\$85)
- Language Certificates (~\$160)
 - DELF (French), DSD (German), DELE (Spanish), HSK (Chinese)
- SAT II Subject Tests



STAMP Levels - Proficiency Scales

STAMP (Standards-Based Measurement of Proficiency)	ACTFL (American Council on the Teaching of FL)	ILR (Interagency Language Roundtable (Continues to Level 5 – Master Professional Performance))	CEFR (Common European Framework)	CBC (College Board Continuum)
10	Superior	3	C1	STAGE 5
9	Advanced-High	2+	B2	STAGE 4
8	Advanced-Mid	2		
7	Advanced-Low			
6	Intermediate-High	1+	B1	STAGE 3
5	Intermediate-Mid	1	A2	STAGE 2
4	Intermediate-Low			
3	Novice-High	0+	A1	STAGE 1
2	Novice-Mid	0		
1	Novice-Low			

In Development

Survive and Cope Level / Limited Communication Abilities

