

Focus on Excellent Teaching & Student Learning



Emp^oria
& PUBLIC SCHOOLS

We build futures.

Panel Introductions

USD 253 Principals:

Jessica Griffin- Logan Elementary

Jared Giffin- Riverside Elementary

Allyson Lyman- Emporia Middle School

Southwest Plains Consultant:

Jason Johnson

USD 253-Emporia

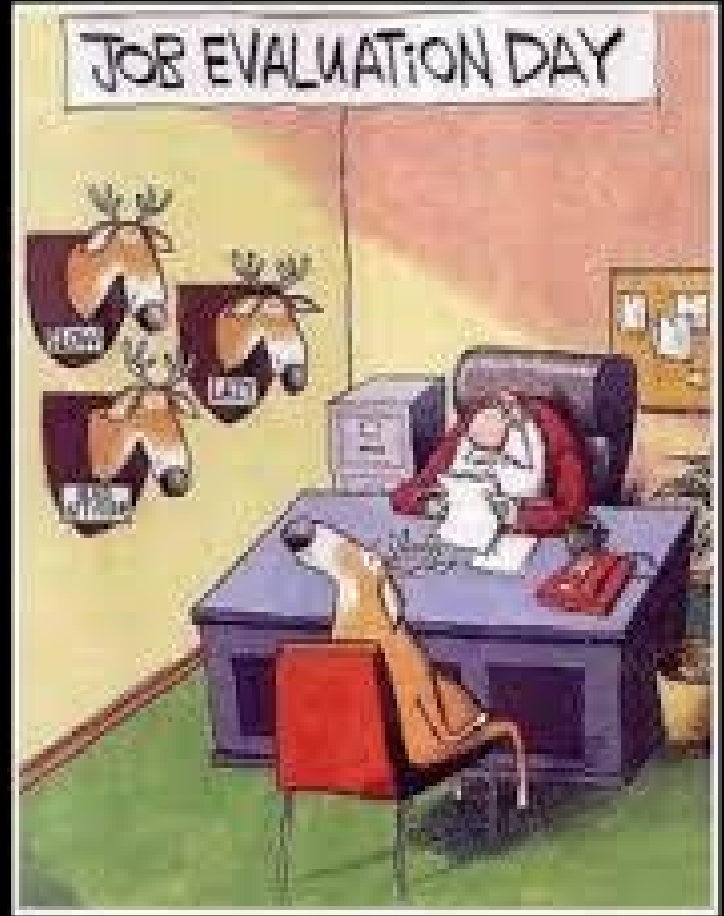
- **5A District**
- **Approx. 4,500 students**
- **424 Teachers**
- **43% Hispanic 47% White**
- **62% Free & Reduced Lunches**

Kansans Can Vision

*Kansas leads the world in
the success of each student.*

Requires... EXCELLENT INSTRUCTION

**What most
people worry
about on
evaluation
day!**



This is the type
of relationship
we all want
with staff that
we evaluate.

“For teachers, as for students, the most effective evaluation comes from someone who sits beside us and helps us grow.”

Carol Ann Tomlinson, “The Delusion of My Dream,” *Educational Leadership*, November 2004



Best Practices for Classroom



- **Brief- 3-5 minutes**
- **Unannounced & Unobtrusive**
- **Objective**
- **Routine**
- **Clear “look fors”**

“Let us all be the leaders we wish we had.” — Simon Sinek, *Leaders Eat Last*

- ★ **High Fives**
- ★ **Professional Learning Decisions**
- ★ **Instructional Conversations**

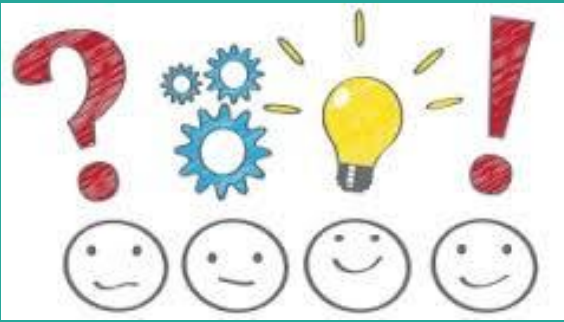
- ★ **Visible Leadership**
- ★ **Self-Reflection**
- ★ **Coaching & Mentoring**
- ★ **Continuous Improvement**

eWalkThrough® Tool

- **Webbased**
- **User Friendly**
- **Instant Feedback**

- **Customized**
- **Analyzes Data**
- **Digital Reports**

EMPORIA's Tool



Panel Discussion

Questions & Reflections on the
Emporia eWalkThrough® Journey

—
Facilitator: Jason Johnson, Southwest
Plains Consultant